

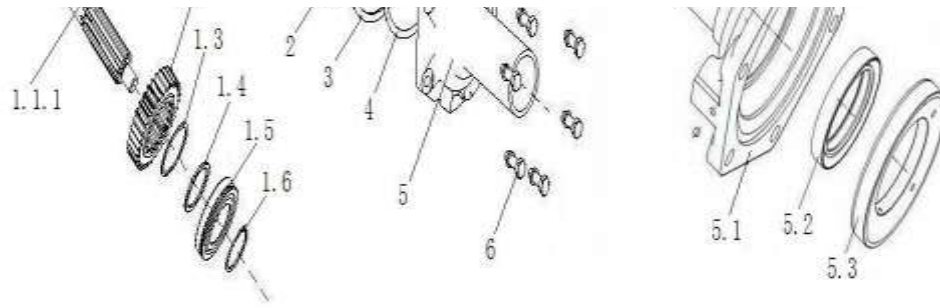
### 3.1 HW19710变速器总成/HW19710 Transmission Assembly

序号/ No.	名 称 / Designation	页 码 /Page No.
3.1.01	变速箱总成/Transmission Ass.	1
3.1.02	变速器前壳组件/Transmission Front Housing	2
3.1.03	变速器中壳组件/Transmission Housing -Middle	3
3.1.04	输入轴及端盖组件(细高齿)/Input Shaft and Cover	4
3.1.05	副轴组件/Auxiliary Shaft	6
3.1.06	主轴组件/Main Shaft	7
3.1.07	惰轮轴组件/Idle Wheel	8
3.1.08	范围档副箱组件/Sub Gearbox	9
3.1.09	小盖组件/Small Cover	15
3.1.10	拨叉轴组件/Fork Shaft	18
3.1.11	油泵及管路组件/Pump and Pipe	19
3.1.12	气动管路阀组件/Air Pipe and Valve	21
3.1.13	离合器操纵组件	22
3.1.14	变速器操纵附件/Shifting Accessories	23
3.1.15	电器开关组件(电磁式传感器)/Electric Switch	24
3.1.16	标牌组件/Nameplate	25





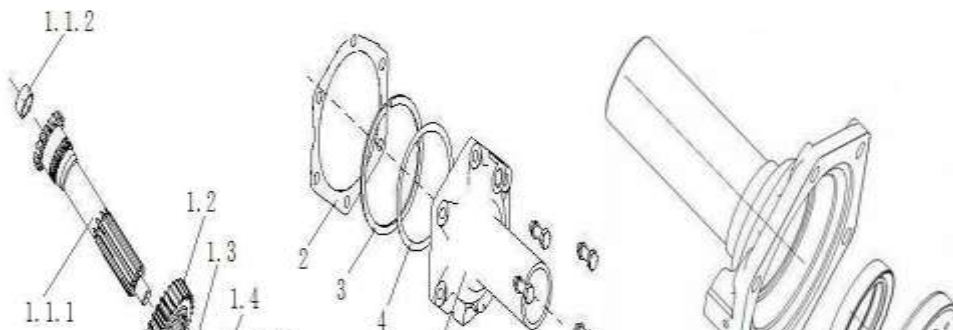




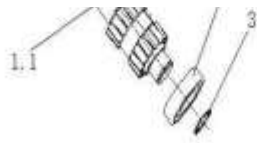
### 3.1.04 输入轴及端盖组件(细高齿)/Input Shaft And Cover

序号	零部件图号	名称	Part Name	数量	备注
No.	Part No.			Qty	Remark
1	AZ2203020021	输入轴及一轴齿轮总成	Input shaft & gear assembly	1	
1.1	AZ2203020103	输入轴总成	Input shaft assembly	1	
1.1.1	WG2210020105	输入轴	Input shaft	1	
1.1.2	WG2229020005	衬套	Bushing	1	
1.2	WG2210020322	一轴齿轮	Gear	1	
1.3	WG2229040003	卡簧	Clip	1	
1.4	WG2229040103	隔套	Sleeve	1	
1.5	WG9003326213	滚动轴承6213N-GB/T276	Bearing	1	
1.6	AZ2208020001	卡簧选用件组	Clip components	1	
1.6.1	WG9003991065	轴用弹性挡圈	Circlip	1	
1.6.2	WG9003992065	轴用弹性挡圈	Circlip	1	
1.6.3	WG9003993065	轴用弹性挡圈	Circlip	1	
1.6.4	WG9003994065	轴用弹性挡圈	Circlip	1	
1.6.5	WG9003995065	轴用弹性挡圈	Circlip	1	
2	WG2229020015	输入轴端盖纸垫	Gasket	1	
3	WG9003990120	止动环120/129.7-GB305	Ring	1	
4	AZ2208020002	输入轴承调整垫片组	Shim	1	
4.1	WG2229020011	调整垫片	Shim	1	
4.2	WG2229020012	调整垫片	Shim	1	
4.3	WG2229020013	调整垫片	Shim	1	

### 3.1.04 输入轴及端盖组件(细高齿)/Input Shaft and Cover



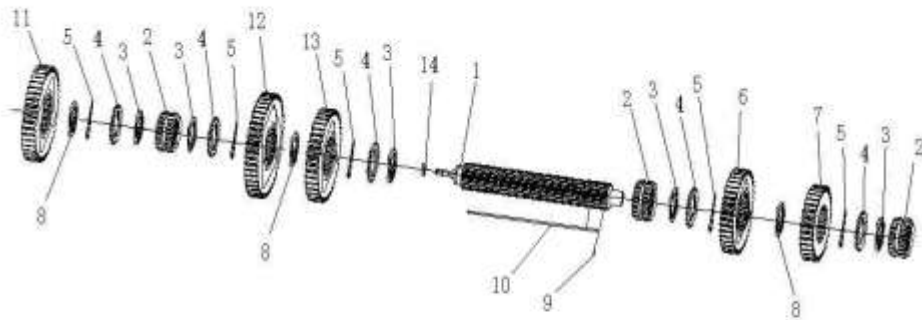




### 3.1.05 副轴组件(细高齿)/Lay Shaft

序号 No.	零部件图号 Part No.	名称	Part Name	数量 Qty	备注 Remark
1	AZ2203030211	副轴总成(左)	Countershaft assembly L	1	
1,1	AZ2210030335	副轴(左)	Countershaft L	1	
1,2	WG9003329309	圆柱滚子轴承NUP309E (带)	Cylindrical roller bearing	1	
1,3	Q43160	轴用弹性挡圈	Circlip	1	
1,4	WG2210030325	副轴传动齿轮	Gear	1	
1,5	WG2210030326	副轴四挡齿轮	Gear	1	
1,6	WG2210030324	副轴三挡齿轮	Gear	1	
1,7	WG2210030203	副轴二挡齿轮	Gear	1	
1,8	WG2229030003	长平键	Key	1	
2	AZ9003990100	止动环100/106.5-GB305	Ring	2	
3	Q43145	轴用弹性挡圈	Circlip	4	
4	WG9003320309	圆柱滚子轴承NUP309E	Cylindrical roller bearing	2	
5	AZ2203030212	副轴总成(右)	Countershaft assembly R	1	
5,1	AZ2210030340	副轴(右)	Countershaft R	1	
5,2	WG9003329309	圆柱滚子轴承NUP309E (带)	Cylindrical roller bearing	1	
5,3	Q43160	轴用弹性挡圈	Circlip	1	
5,4	WG2210030325	副轴传动齿轮	Gear	1	
5,5	WG2210030326	副轴四挡齿轮	Gear	1	
5,6	WG2210030324	副轴三挡齿轮	Gear	1	
5,7	WG2210030203	副轴二挡齿轮	Gear	1	
5,8	WG2229030003	长平键	Key	1	

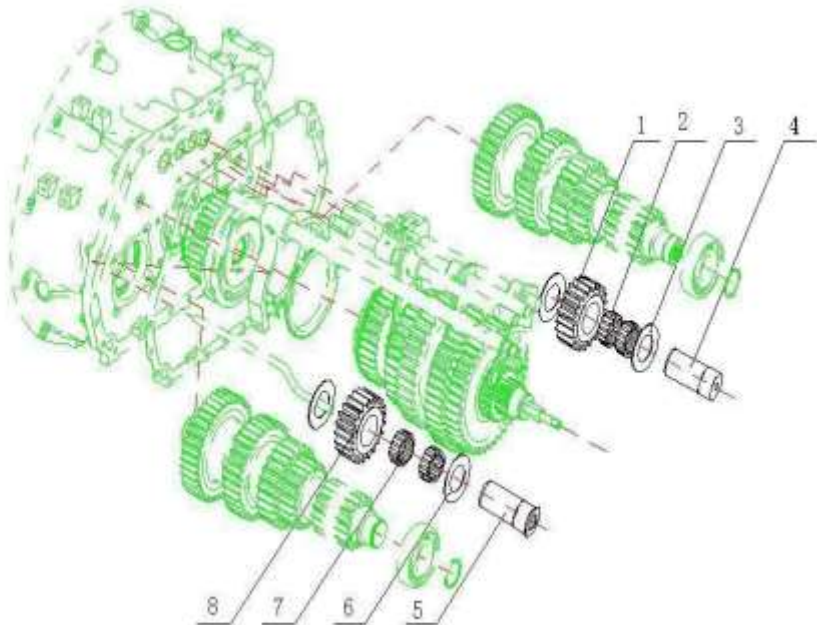
### 3.1.06 主轴组件(细高齿)/Main Shaft



### 3.1.06 主轴组件(细高齿)/Main Shaft

序号 No.	零部件图号 Part No.	名称	Part Name	数量 Qty	备注 Remark
1	WG2203040030	主轴带球头总成	Main shaft assembly	1	
2	WG2210040210	主轴滑套	Sleeve	3	
3	WG2229040073	主轴齿轮挡片	Shim	5	
4	WG2210040608	花键挡片	Shim	5	
5	WG2229040420	孔用压扁钢丝挡圈	Circlip	5	
6	WG2210040425	主轴三挡齿轮	Main shaft 3rd gear	1	
7	WG2210040424	主轴四挡齿轮	Main shaft 4th gear	1	
8	WG2229040072	主轴齿轮隔片	Shim	3	
9	Q5280514	弹性圆柱销	Pin	2	
10	WG2229040223	六角键	Key	1	
11	WG2210040319	主轴倒挡齿轮	Gear	1	
12	WG2210040440	主轴一档齿轮	Main shaft 1st gear	1	
13	WG2210040416	主轴二挡齿轮	Gear	1	
14	AZ2208040002	主轴大挡片	Shim	1	

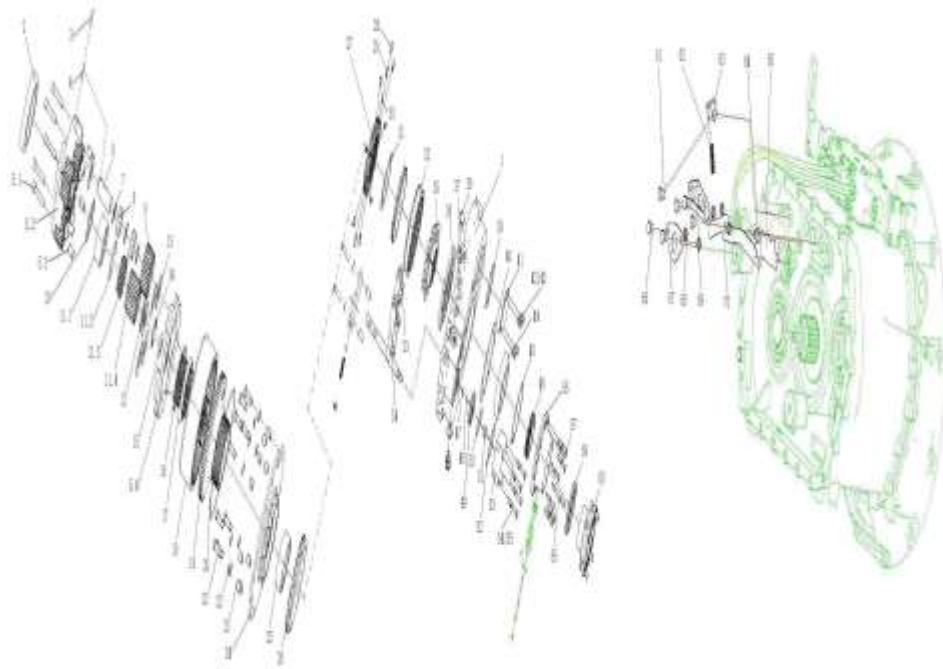
### 3.1.07 惰轮轴组件/Idle Wheel





No.	Part No.	名称	Part Name	Qty	Remark
1	AZ2220100105	变速器后壳	Rear housing	1	
2	WG9003326020	滚动轴承6020 GB/T276	Bearing	1	
3	Q5280630	弹性圆柱销	Pin	5	
4	Q5280430	弹性圆柱销	Pin	5	
5	AZ2203100002	行星架总成	Planetary gear frame assembly	1	
5,1	WG9003821255	内六角圆柱头螺钉M12X1.	Screw	5	
5,2	WG2225100002	行星架（前）	Planetary gear frame	1	
5,3	WG2229100001	传扭套	Sleeve	5	
5,4	AZ2225100001	输出轴	Output shaft	1	
5,5	AZ9007970271	螺纹紧固胶LOCTITE271	Thread glue	1	
6	WG2212100001	行星轮轴	Shaft	5	
7	WG2229100007	滚子间隔片	Shim	15	
8	WG9003321118	圆柱滚子11X18IIIb GB466	Roller	120	
9	WG2210100004	行星轮	Gear	5	
10	WG2229100005	太阳轮垫片(前)	Gasket	1	
11	AZ2203100003	太阳轮及套总成	Gear assembly	1	
11,1	WG2210100002	花键套	Sleeve	1	
11,2	Q43875	孔用钢丝挡圈	Circlip	1	
11,3	WG2210100003	过渡套	Sleeve	1	
11,4	WG2210100001	太阳轮	Gear	1	

### 3.1.08 范围挡副箱组件（电磁式传感器）/Sub gearbox

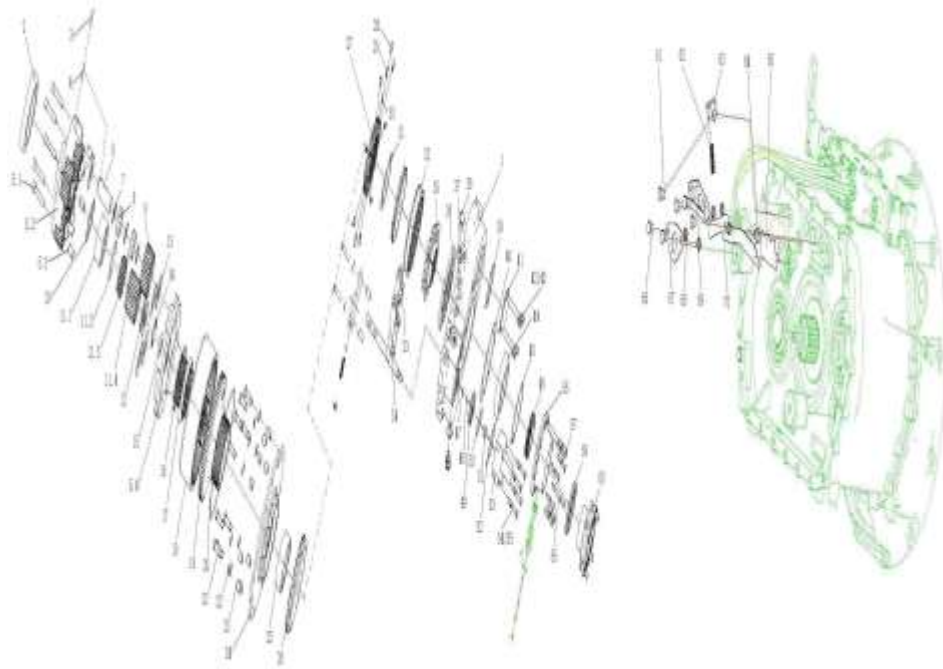


### 3.1.08 范围挡副箱组件（电磁式传感器）/Sub gearbox

序号	零部件图号	名称	Part Name	数量	备注
No.	Part No.			Qty	Remark
12	WG2229100006	太阳轮垫片(后)	Gasket	1	
13	WG2229100008	行星轮垫片	Shim	10	

14	WG9003991056	孔用弹性挡圈	Circlip	1	
15	WG9003326322	滚动轴承63/22 GB/T276	Bearing	1	
16	WG9003991125	孔用压扁钢丝挡圈	Circlip	1	
17	WG9003321820	滚动轴承61820 GB/T276	Bearing	1	
18	WG2210100005	内齿圈	Ring gear	1	
19	WG2210100006	齿圈支架	Bracket	1	
20	WG2229100012	钢丝挡圈	Circlip	1	
21	Q150B1240	六角头螺栓	Bolt	9	
22	Q40112	平垫圈	Washer	9	
23	WG2229100002	传扭套	Sleeve	9	
24	WG2203100005	低档锥毂总成	Tapered plate assembly	1	
25	WG2229100032	隔套	Sleeve	1	
26	WG2210100109	范围档同步环	Ring	2	
27	WG2210100007	范围档同步齿座	Base	1	
28	WG2229020001	同步推块	Block	9	
29	WG2229020002	推块外弹簧	Spring	9	
30	WG2229020003	推块内弹簧	Spring	9	
31	WG9003991130	轴用弹性挡圈	Circlip	1	

3.1.08 范围档副箱组件（电磁式传感器）/Sub gearbox

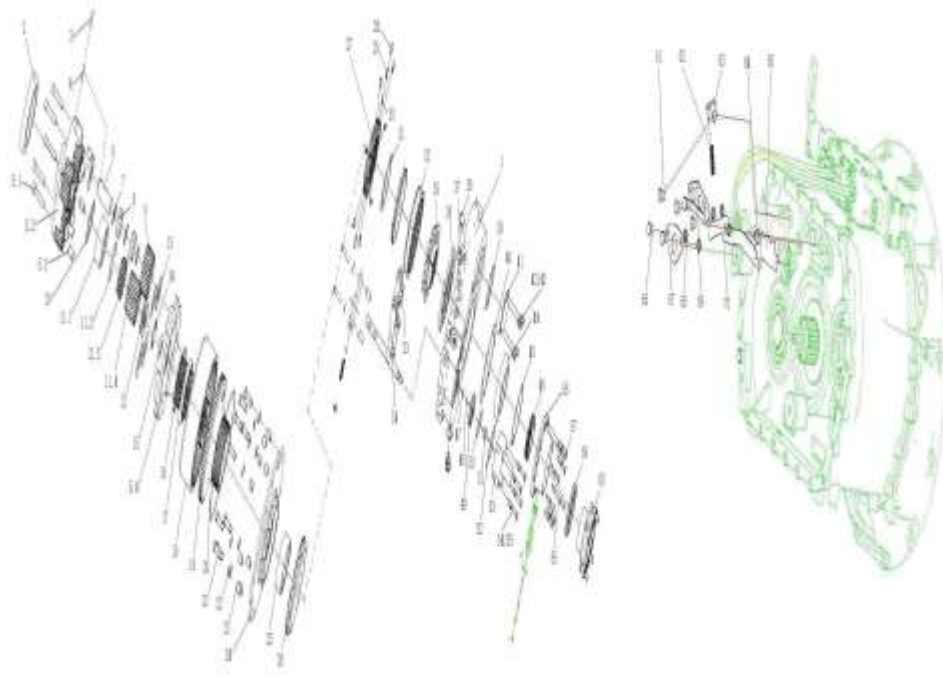


3.1.08 范围档副箱组件（电磁式传感器）/Sub gearbox

序号	零部件图号	名称	Part Name	数量	备注
No.	Part No.			Qty	Remark
32	AZ2210100059	范围档同步滑套	Sleeve	1	
33	AZ2229100022	拨叉摆块	Block	2	
34	WG2214100001	范围档拨叉	Fork	1	
35	WG2203100006	高档锥毂总成	Tapered plate assembly	1	
36	WG2203100007	导油环总成	Oil ring assembly	1	

37	WG9003990024	波形弹性垫圈	Wave washer	2	
38	WG2229100043	拨叉支撑销	Pin	2	
39	WG2229100048	盖板衬垫	Gasket	1	
40	WG2229100041	输出轴后端盖纸垫	Gasket	1	
41	WG2229100047	取力轴孔盖板	Plate	1	
42	Q150B1216	六角头螺栓	Bolt	4	
43	Q40312	弹簧垫圈	Spring washer	4	
44	WG9003326218	滚动轴承6218 GB/T276	Bearing	1	
45	AZ2208100003	调整垫片组	Shim	1	
45.1	WG2229100035	调整垫片	Shim	1	
45.2	WG2229100036	调整垫片	Shim	1	
45.3	WG2229100037	调整垫片	Shim	1	
46	WG2210100020	传感器齿圈	Ring gear	1	
47	WG9003072503	O形圈35502500 GB3452.1	O-ring	2	
48	WG9003071700	O形圈26500170 GB3452.1	O-ring	1	

### 3.1.08 范围挡副箱组件（电磁式传感器）/Sub gearbox

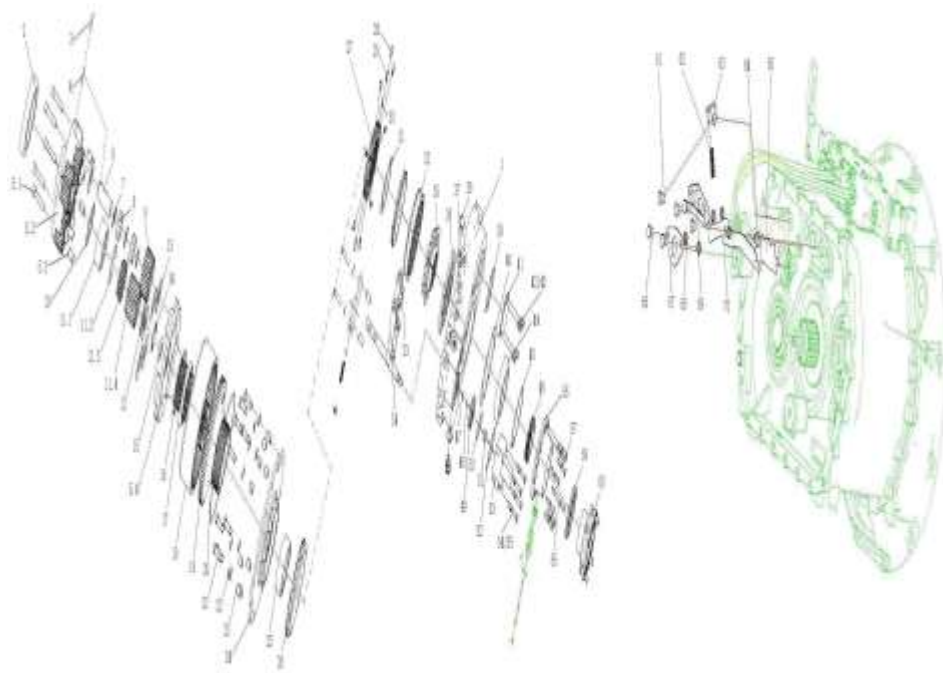


### 3.1.08 范围挡副箱组件（电磁式传感器）/Sub gearbox

序号	零部件图号	名称	Part Name	数量	备注
No.	Part No.			Qty	Remark
49	WG2229100050	范围挡活塞	Piston	1	
50	WG9003076900	O形圈53006900 GB3452.1	O-ring	1	
51	AZ9003870016	六角螺母M16×1.5	Nut	1	
52	WG2229100049	范围挡气缸纸垫	Gasket	1	
53	WG2222100009	范围挡气缸	Range cylinder	1	
54	Q150B1065	六角头螺栓	Bolt	4	
55	Q40310	弹簧垫圈	Spring washer	4	
56	WG2222100023	输出轴后端盖(双油封)	Rear cover	1	

57	Q150B1055	六角头螺栓	Bolt	7	
58	Q170B1055	六角头头部带孔螺栓	Bolt	1	
59	WG9003070105	骨架油封PS 105 130 14	Oil seal	1	
60	WG2210100018	输出法兰Φ180端面齿	Flange	1	
61	Q150B1020	六角头螺栓	Bolt	1	
62	WG2229210019	范围档锁弹簧	Spring	1	
63	WG2203100012	弹簧定位销总成	localizer Pin assembly	1	
64	WG2229100056	锁板支销	Pin	1	
65	WG2229100175	锁板垫板	Plate	1	
66	Q150B1025	六角头螺栓	Bolt	5	
67	WG2229100052	锁板压板（小）	Plate	1	
68	WG2229100054	压板垫块	Block	5	

### 3.1.08 范围挡副箱组件（电磁式传感器）/Sub gearbox

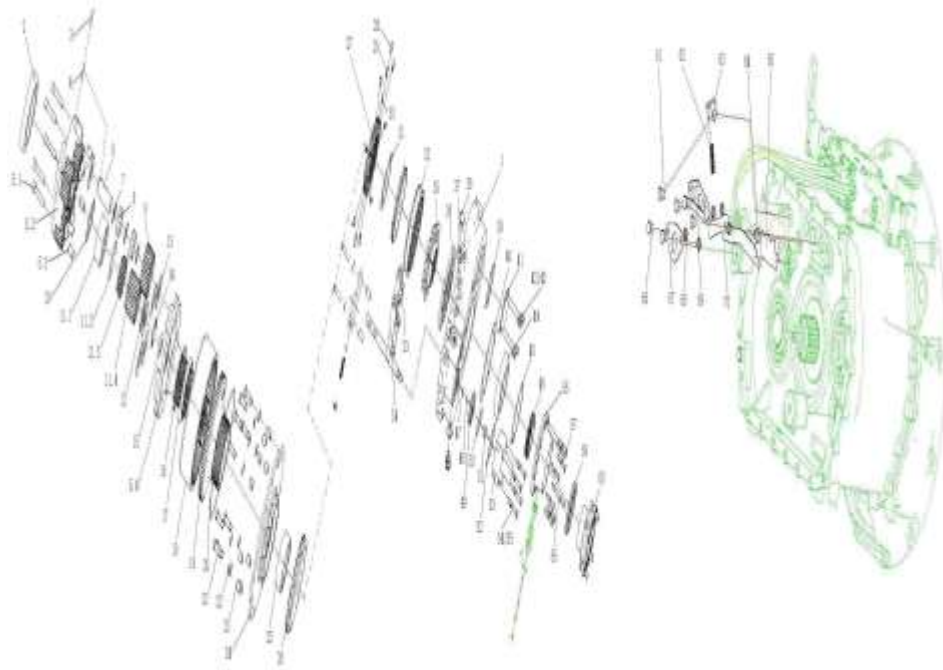


### 3.1.08 范围挡副箱组件（电磁式传感器）/Sub gearbox

序号	零部件图号	名称	Part Name	数量	备注
No.	Part No.			Qty	Remark
69	WG2229100174	锁板压板（大）	Plate	1	
70	WG2229100173	主副箱互锁板	Plate	1	
71	AZ9007970271	螺纹紧固胶LOCTITE271	Thread glue	1	
72	AZ9007990001	硅酮密封胶	Sealant	1	
73	Q40310	弹簧垫圈	Spring washer	8	
74	AZ9007970242	螺纹紧固胶LOCTITE242	Thread glue	1	
75	AZ9007990001	硅酮密封胶	Sealant	1	
76	WG2229100072	压板	Plate	1	
77	WG2229100073	螺栓	Bolt	1	
78	AZ9007970242	螺纹紧固胶LOCTITE242	Thread glue	1	
79	Q150B0820	六角头螺栓	Bolt	1	

80	AZ2229100075	回油孔盖板	Cover	1	
81	AZ9007990001	硅酮密封胶	Sealant	1	
82	Q40310	弹簧垫圈	Spring washer	1	
83	AZ9007970271	螺纹紧固胶LOCTITE271	Thread glue	1	
84	WG2229100062	副箱纸垫	paper gasket	1	
85	WG2229100061	吊装板	Plate	1	
86	Q150B1050	六角头螺栓	Bolt	16	
87	Q150B1060	六角头螺栓	Bolt	6	
88	Q40310	弹簧垫圈	Spring washer	24	

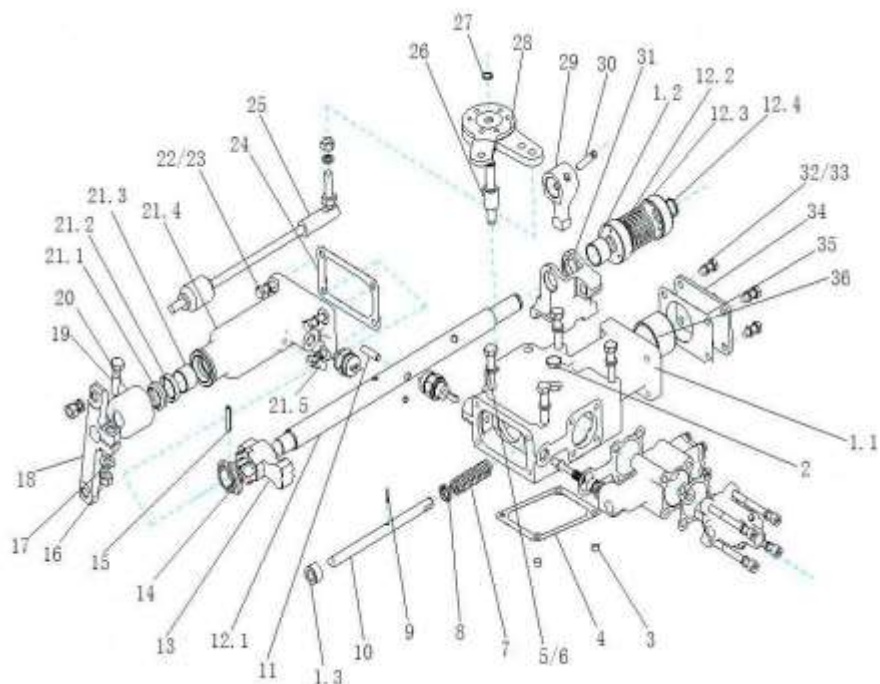
### 3.1.08 范围挡副箱组件（电磁式传感器）/Sub gearbox



### 3.1.08 范围挡副箱组件（电磁式传感器）/Sub gearbox

序号 No.	零部件图号 Part No.	名称	Part Name	数量 Qty	备注 Remark
89	WG2229100011	固定螺母	Nut	1	
90	WG2229100071	堵塞	Plug	1	
91	WG2229100074	锁片	Shim	1	
92	AZ9007970242	螺纹紧固胶LOCTITE242	Thread glue	1	
93	WG2214100002	范围档拨叉轴	Fork shaft	1	
94	WG9003070800	O形圈18000800 GB3452.	O-ring	1	
95	WG9003070800	O形圈18000800 GB3452.	O-ring	1	
96	WG9003801058	六角头螺栓Q150B1058	Bolt	2	
97	WG9003073150	O形圈35503150 GB3452.	O ring	1	
98	WG9003345138	滚针P5×13.8 GB309	Needle	1	


### 3.1.09 10挡小盖组件(双杆)/Small Cover

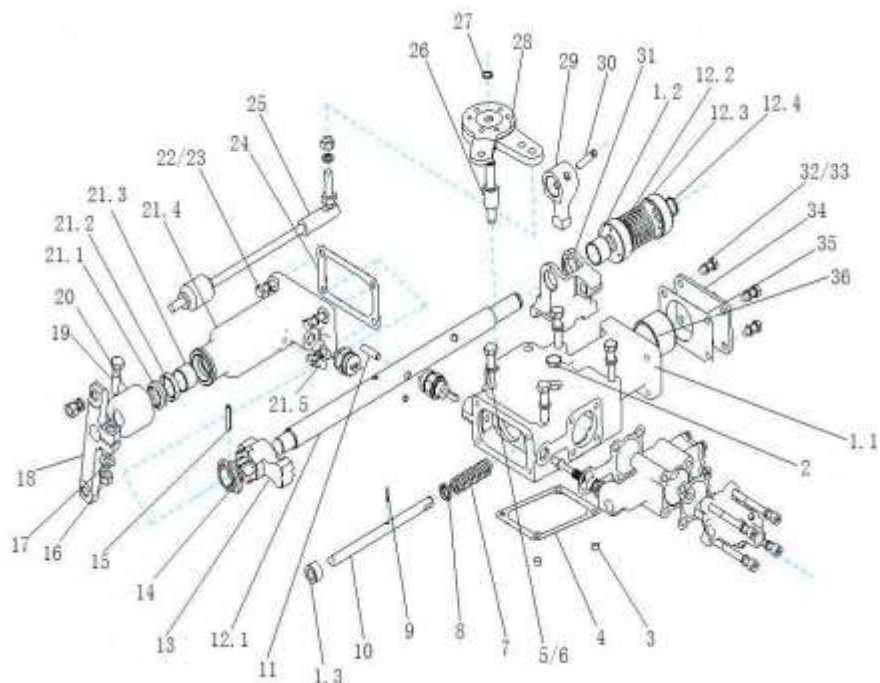


### 3.1.09 10挡小盖组件(双杆)/Small Cover

序号	零部件图号	名称	Part Name	数量	备注
No.	Part No.			Qty	Remark
1	AZ2203210030	小盖壳体总成	Housing assembly	1	
1,1	WG2222210038	小盖壳体(10挡, 双杆)	Housing assembly	1	
1,2	WG2229002520	复合衬套SF2 25×28×20	Bushing	1	
1,3	WG2229210001	衬套	Bushing	1	
1,4	AZ9007970001	LOCTITE粘结剂	LOCTITE	1	
2	Q72220	碗形塞片	Shim	1	
3	WG2229210036	定位导套	Sleeve	2	
4	WG2229210070	小盖纸垫	Gasket	1	
5	Q150B1085	六角头螺栓	Bolt	4	
6	Q40310	弹簧垫圈	Spring washer	4	
7	WG2229210333	自锁弹簧	Spring	1	
8	WG2229210011	弹簧挡片	Spacer	1	
9	AZ9003343178	滚针P3×17.8 GB309	Needle	1	
10	WG2212210005	自锁销轴	Pin	1	
11	WG2229210012	驱动销	Pin	1	
12	AZ2203210038	换挡轴总成	Shaft assembly	1	
12,1	WG2212210007	换挡轴(双杆)	Shaft	1	

12.2	WG2229210003	定中弹簧(高档侧)	Spring	1	
12.3	AZ2229210007	定中座环	Ring	2	
12.4	Q43120	轴用弹性挡圈	Circlip	1	

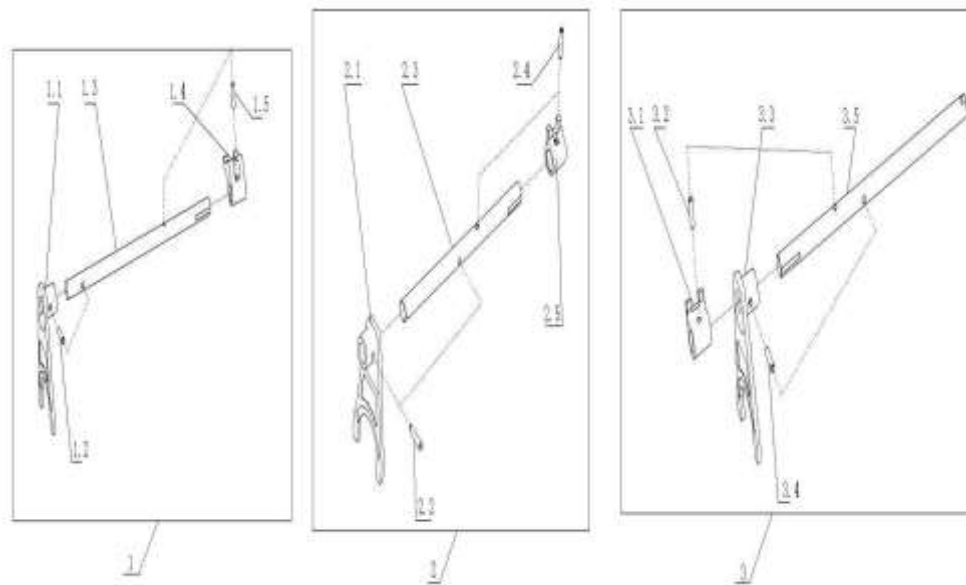
### 3.1.09 10挡小盖组件(双杆)/Small Cover



### 3.1.09 10挡小盖组件(双杆)/Small Cover

序号 No.	零部件图号 Part No.	名称	Part Name	数量 Qty	备注 Remark
13	WG2229210008	扇形自锁块	Block	1	
14	WG2229210014	传感器驱动环	Ring	1	
15	Q5280632	弹性圆柱销	Pin	1	
16	Q340B10T13F2	I型六角螺母	Nut	1	
17	Q41810	波形弹性垫圈	Wave washer	1	
18	WG2214210004	摇臂	Rocker arm	1	
19	Q150B1040TF2	六角头螺栓	Bolt	1	
20	WG2229210026	防尘罩	Dust shield	1	
21	AZ2203210008	小盖端盖总成(双杆)	Cover assembly	1	
21.1	WG9003072502	端盖外油封	Oil seal	1	
21.2	WG9003072501	端盖内油封	Oil seal	1	
21.3	WG2229002520	复合衬套SF2 25×28×20	Bushing	1	
21.4	WG2222210034	小盖端盖(双杆摇臂侧)	Cover	1	
21.5	Q901	常开式通气塞	Breather	1	
22	Q150B0825	六角头螺栓	Bolt	4	
23	Q40308	弹簧垫圈	Spring washer	4	
24	WG2229210017	端盖衬垫	Gasket	1	
25	WG2229210041	支撑杆总成	Rod assembly	1	
26	WG2229270003	选档支撑轴	Shaft	1	
27	Q43112	轴用弹性挡圈	Circlip	1	



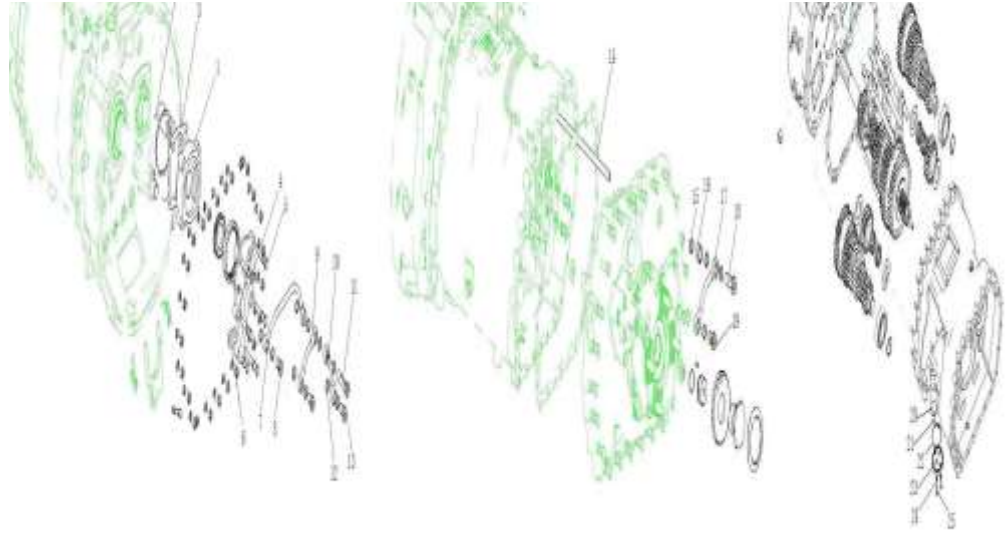


### 3.1.10 拨叉轴组件/Fork Shaft

序号 No.	零部件图号 Part No.	名称	Part Name	数量 Qty	备注 Remark
1	AZ2203220101	倒爬挡拨叉轴总成	Reverse gear fork shaft ass.	1	
1,1	WG2214220001	拨叉	Fork	1	
1,2	WG2229220002	销	Pin	1	
1,3	WG2212220201	倒爬挡拨叉轴	Reverse gear fork shaft	1	
1,4	WG2214220002	倒挡拨块	Block	1	
1,5	WG2229220001	销	Pin	1	
2	AZ2203220010	一、二挡拨叉轴总成	1st&2nd gear fork shaft ass	1	
2,1	WG2214220001	拨叉	Fork	1	
2,2	WG2229220002	销	Pin	1	
2,3	WG2212220102	一、二挡拨叉轴	1st&2nd gear fork shaft	1	
2,4	WG2229220001	销	Pin	1	
2,5	WG2214220004	前进档拨块	Block	1	
3	AZ2203220103	三、四挡拨叉轴总成	3rd&4th gear fork shaft ass	1	
3,1	WG2214220003	前进档拨块	Block	1	
3,2	WG2229220001	销	Pin	1	
3,3	WG2214220001	拨叉	Fork	1	
3,4	WG2229220002	销	Pin	1	
3,5	WG2212220103	三、四挡拨叉轴	3rd&4th gear fork shaft	1	

### 3.1.11 油泵及管路组件/Oil Pump And Pipe





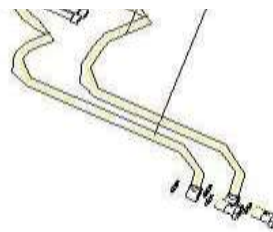
### 3.1.11 油泵及管路组件/Oil Pump And Pipe

序号	零部件图号	名称	Part Name	数量	备注
No.	Part No.			Qty	Remark
1	WG2203240005	油泵总成	Oil pump	1	
2	WG9003338000	钢球8.000 G200b GB308	Ball	1	
3	WG2229000005	副轴端盖纸垫		1	
4	Q40110	平垫圈	Washer	2	
5	Q150B1070	六角头螺栓	Bolt	4	
6	WG2229240030	进油管纸垫	Gasket	1	
7	WG2203240013	箱体进油管总成	Tube assembly	1	
8	1,90004E+11	空心螺栓	Hollow bolt	2	
9	WG2203240012	输入轴进油管总成	Tube assembly	1	
10	WG2203240011	出油管总成	Tube assembly	1	
11	WG9003961670	空心螺栓	Hollow bolt	1	
12	WG9004130016	组合密封垫圈	Gasket assembly	8	
13	1,90004E+11	空心螺栓	Hollow bolt	1	
14	WG2229240108	箱内管2	Tube	1	
15	WG9004130016	组合密封垫圈	Gasket assembly	5	
16	WG2229240010	衬套	Bushing	1	
17	WG2203240014	副箱进油管总成	Tube assembly	1	
18	WG9003961650	空心螺栓	Hollow bolt	1	
19	1,90004E+11	空心螺栓	Hollow bolt	1	
20	WG2203240007	滤网总成	Net assembly	1	

### 3.1.11 油泵及管路组件/Oil Pump And Pipe



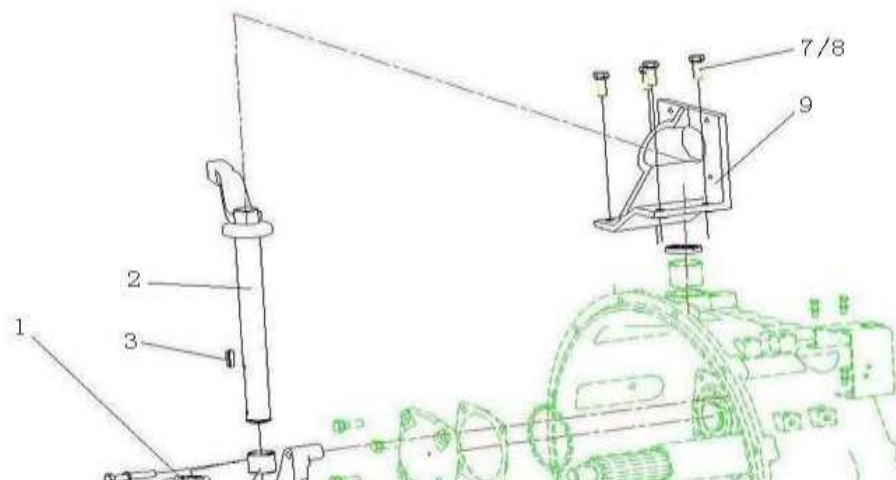


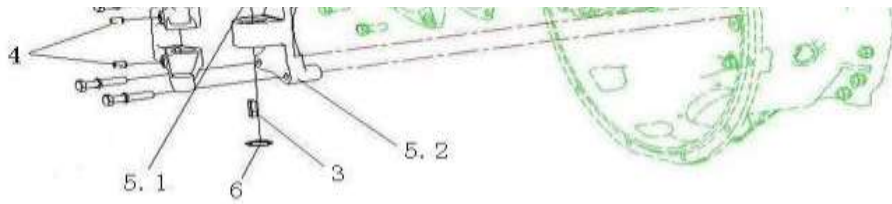


### 3.1.12 气动管路阀组件/Air Pipe And Valve

序号 No.	零部件图号 Part No.	名称	Part Name	数量 Qty	备注 Remark
1	WG2229250023	气控阀纸垫	Gasket	1	
2	WG2229250015	锁止销	Pin	1	
3	WG2229250004	弹簧	Spring	1	
4	WG2229250017	衬套	Bushing	1	
5	WG9003071700	O形圈26500170 GB3452.1	O-ring	1	
6	WG2229250006	直通(NPT 1/8-4X2)	Nozzle	1	
7	WG2203250010	气控锁止阀总成	Air control valve assembly	1	
8	WG2229250024	双H阀衬垫	Gasket	1	
9	WG2203250003	双H阀总成	Valve	1	
10	Q72314	密封垫圈	Gasket	8	
11	190003962621	空心螺栓	Hollow bolt	4	
12	Q218B0880	内六角圆柱头螺钉	Screw	4	
13	Q40308	弹簧垫圈	Spring washer	4	
14	WG2203250019	范围挡成型软管总成(高挡)	Hose	1	
15	WG2203250018	范围挡成型软管总成(低挡)	Hose	1	

### 3.1.13 离合器操纵组件/Clutch Control System

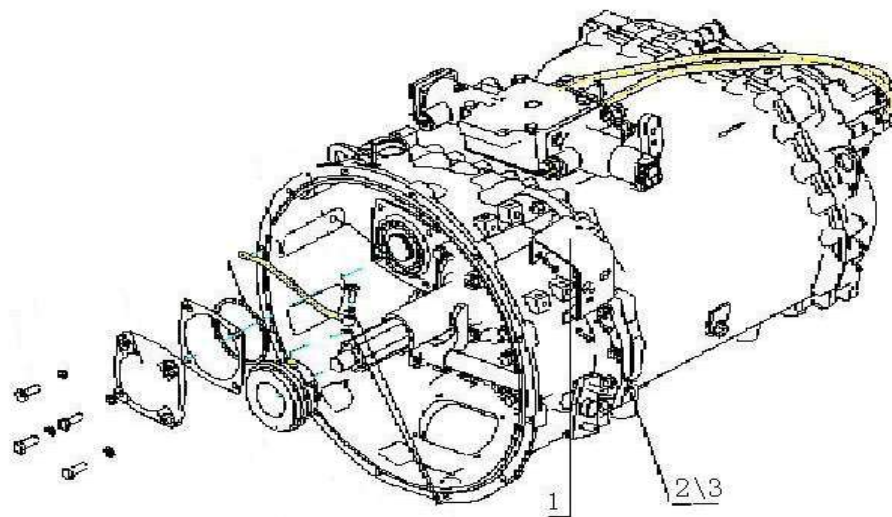




### 3.1.13 离合器操纵组件/Clutch Control System

序号 No.	零部件图号 Part No.	名称	Part Name	数量 Qty	备注 Remark
1	WG2214260001	离合器分离拨叉	Fork	1	
2	WG2203260008	拨叉轴总成	Shaft assembly	1	
3	Q5510825	普通平键	Key	2	
4	Q2881016F9	内六角锥端紧定螺钉	Screw	2	
5	AZ2203260001	拨叉轴支架总成	Bracket assembly	1	
5.1	WG2229003030	复合衬套	Bushing	1	
5.2	WG2229260001	拨叉轴支架	Bracket	1	
6	Q43130	轴用弹性挡圈	Circlip	1	
7	Q150B1030	六角头螺栓	Bolt	4	
8	Q40310	弹簧垫圈	Spring washer	4	
9	WG2229260016	助力缸支架	Bracket	1	
10	Q40310	弹簧垫圈	Spring washer	3	
11	AZ9007970242	螺纹紧固胶	Thread glue	1	
12	AZ2229260014	盖板	Cover	1	
13	Q150B0615	六角头螺栓	Bolt	4	
14	Q40306	弹簧垫圈	Spring washer	4	
15	WG9003801062	六角头螺栓Q150B1062	Bolt	3	

### 3.1.14 变速器操纵附件/Transmission Control Accessory









8	Q40312	2	Spring washer
9	Q150B1230	2	Hexagon head bolt
10	Q40312	2	Spring washer
11	AZ9710291001	1	Input shaft
12	AZ9729290009	1	Anti-sale
13	AZ9003394727	1	Needle bearing
14	AZ9003394717	1	Needle roller
15	AZ9710291004	1	Sliding sleeve
16	AZ9714291001	1	Shift fork
17	AZ9003900026	1	Cylindrical pin
18	AZ9710291005	1	Input gear
19	AZ9003320307	1	Cylindrical roller bearing
20	AZ9003990086	1	Stop ring
21	AZ9729291009	1	Spacer
22	Q43135	1	Circlip for shaft
23	AZ9720291002	1	Power take-off
24	179100710068	1	Pressure switch
25	Q72314	1	Sealing washer
26	190003330183	2	Steel ball
27	Q218B1045	7	Socket head cap
28	Q40310	7	Spring washer
29	AZ9722291003	1	Input shaft end
30	AZ9722291005	1	Input shaft end
31	AZ2203240006	1	Power take-off inlet pipe
32	AZ9712291001	1	Fork shaft
33	AZ9003072500	2	O-ring 26502500
34	AZ9729291007	1	spring
35	AZ9729290008	1	Cylinder head
36	AZ9722291002	1	Cylinder head
37	Q218B1030	2	Hexagon socket head cap screws
38	Q40310	2	Spring washer
39	190003962607	1	Hollow bolt
40	Q72310	2	Sealing washer
41	Q218B1030	4	Hexagon socket head cap screws
42	Q40310	4	Spring washer
43	Q150B1245	1	Hexagon head bolt
44	Q40112T16F9	1	Flat washer
45	AZ9003071180	1	O-Ring 18001180
46	AZ9003073350	1	O-Ring 26503350
47	AZ9729290004	1	Pressure plate
48	AZ9710291002	1	Flange φ100
49	AZ9003070050	1	Skeleton oil seal
50	Q218B1030	4	Hexagon socket head cap screws
51	Q40310	4	Spring washer
52	AZ9722291001	1	Output shaft end
53	AZ9722291004	1	Paper pad for output shaft end
54	AZ9003990085	1	Stop ring
55	Q61902	1	Hexagon socket

56	AZ9003322209	1	Cylindrical weller bearing
57	AZ9710291006	1	Output gear shaft
58	AZ9003321307	1	Cylindrical weller bearing
59	Q150B1035	1	Hexagon head bolt
60	Q40310	1	Spring washer
61	AZ9729290002	1	Power pad shell
62	AZ9729290011	1	Transmission
63	AZ9003070800	1	O-Ring 18000800
64	AZ9722291006	1	Power take-off liner

3000002

3010003

3020012



3030010

3040009

3050003

310004











3210045



3220463

3240363



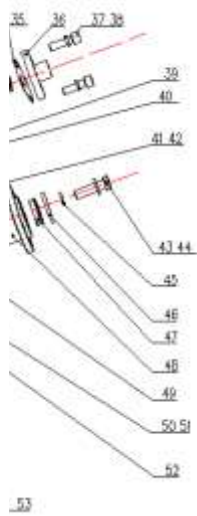
3250024

3260018

3270001

3280004

3300001



53

名称	Note
轴用弹性挡圈	
滚动轴承6307 GB/T276-94	
取力器花键轴	
圆柱销	
取力器前壳	
圆柱销	
六角头螺栓	

弹簧垫圈	
六角头螺栓	
弹簧垫圈	
输入轴	
防转销	
滚针轴承K42 47 27	
滚针轴承K42 47 17	
滑套	
拨叉	
圆柱销 $\phi 6h8 \times 26$ Q5220626	
输入齿轮	
圆柱滚子轴承NUP307E(带止动槽)	
止动环80/86.6GB305	
隔圈	
轴用弹性挡圈	
取力器后壳	
压力开关(messmer) 订货号311086	
密封垫圈	
钢球--10.0000 G200 b GB308	
内六角圆柱头螺钉	
弹簧垫圈	
输入轴端盖纸垫	
输入轴端盖	
取力器进油管总成	
拨叉轴	
O形圈26502500 GB3452.1	
弹簧	
气缸盖纸垫	
气缸盖	
内六角园柱头螺钉	
弹簧垫圈	
空心螺栓	
密封垫圈	
内六角园柱头螺钉	
弹簧垫圈	
六角头螺栓	
平垫圈Q40112T16F9	
O形圈18001180 GB3452.1-82	
O形圈26503350 GB3452.1-82	
压板	
凸缘 $\phi 100$	
骨架油封PS 55 80 12	
内六角园柱头螺钉	
弹簧垫圈	
输出轴端盖	
输出轴端盖纸垫	
止动环85/91.6GB305	
内六角锥形螺塞	

圆柱滚子轴承NUP2209N (带止动槽)	
输出齿轮轴	
圆柱滚子轴承NJ307E	
六角头螺栓	
弹簧垫圈	
取力器壳纸垫	
传扭套	
O形圈18000800 GB3452.1	
取力器衬垫	